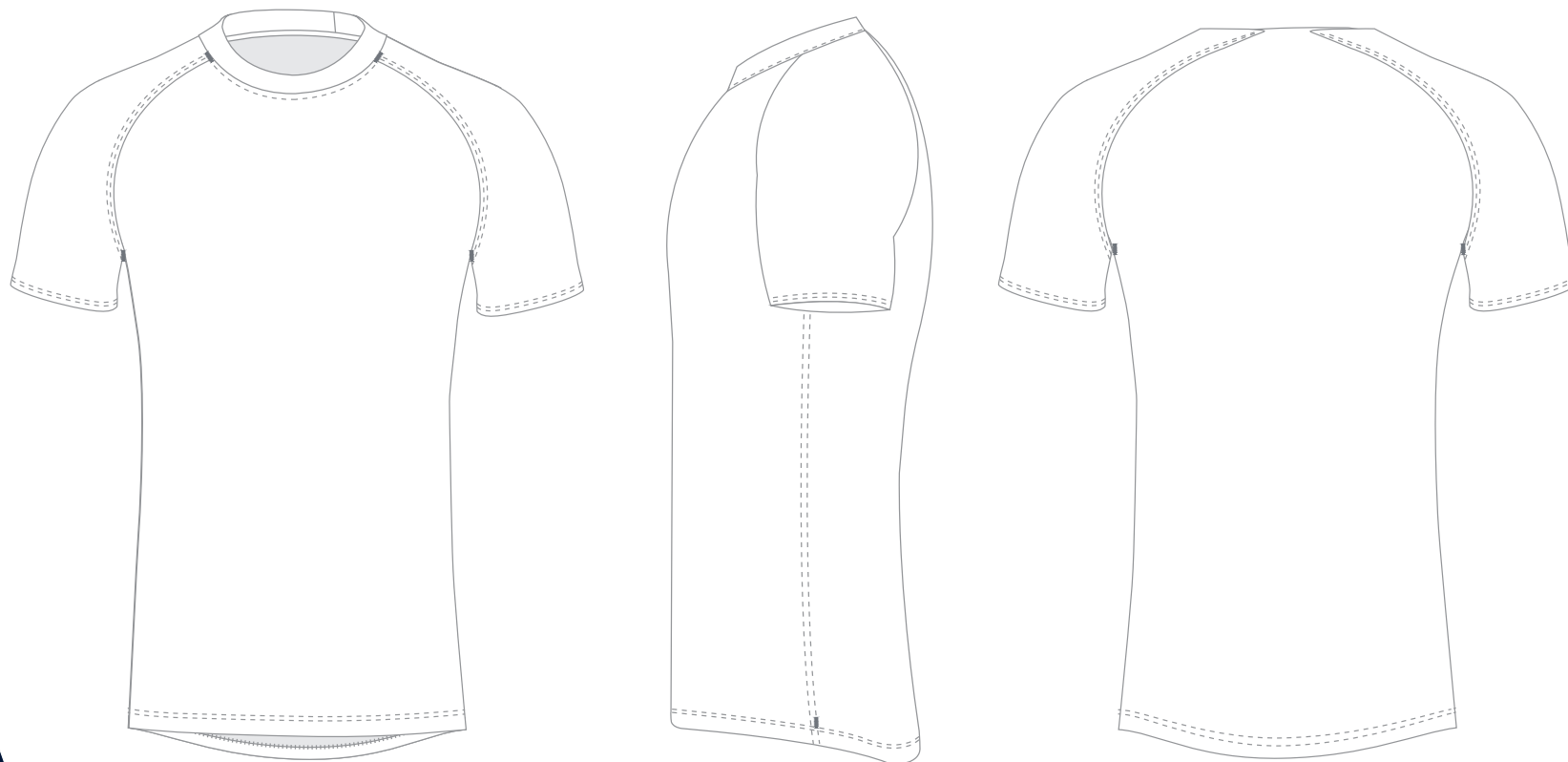


MUNSHINI SPORTSWEAR

SIZING- RUGBY

CONTACT : SALES@MUNSHINI.COM FOR FURTHER INFORMATION

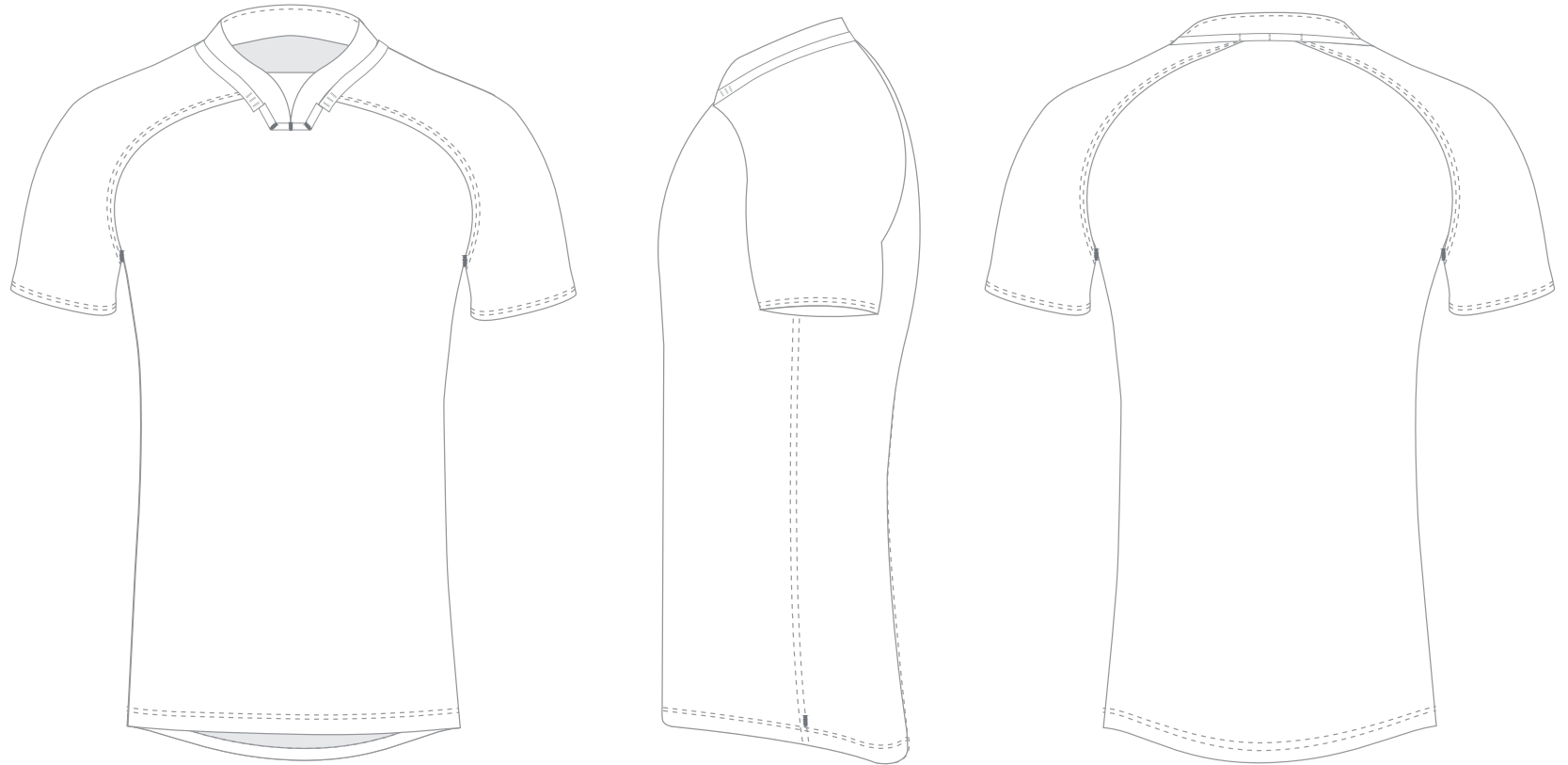
RUGBY SHIRT - STANDARD FIT - MENS



	XSJ	SJ	MJ	LJ	YOUTH	SMALL	MEDIUM	LARGE	XL	2XL	3XL
TO FIT CHEST	28	30	32	34	36	38	40	44	48	50	54

FULLY SUBLIMATED - MORE COLLARS AVAILABLE
FABRIC OPTIONS - THT951, FK250
PLEASE NOTE FABRICS CAN ALTER SIZING

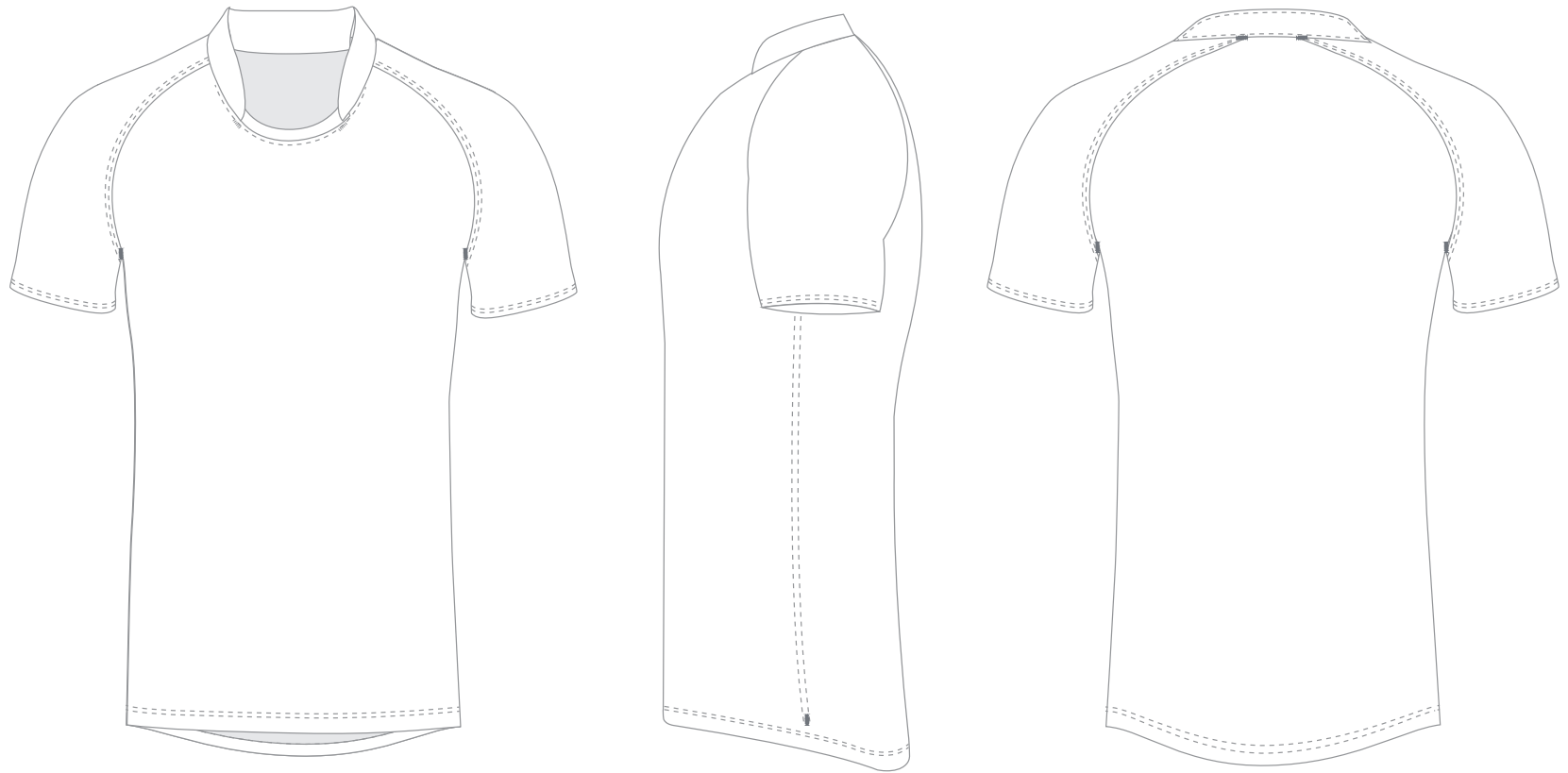
RUGBY SHIRT - PRO FIT - MENS



	YOUTH	SMALL	MEDIUM	LARGE	XL	2XL	3XL	4XL	5XL
TO FIT CHEST	32	35	38	42	44	48	50	52	54

FULLY SUBLIMATED - MORE COLLARS AVAILABLE
FABRIC OPTIONS - THT 951 ADVISED
PLEASE NOTE FABRICS CAN ALTER SIZING

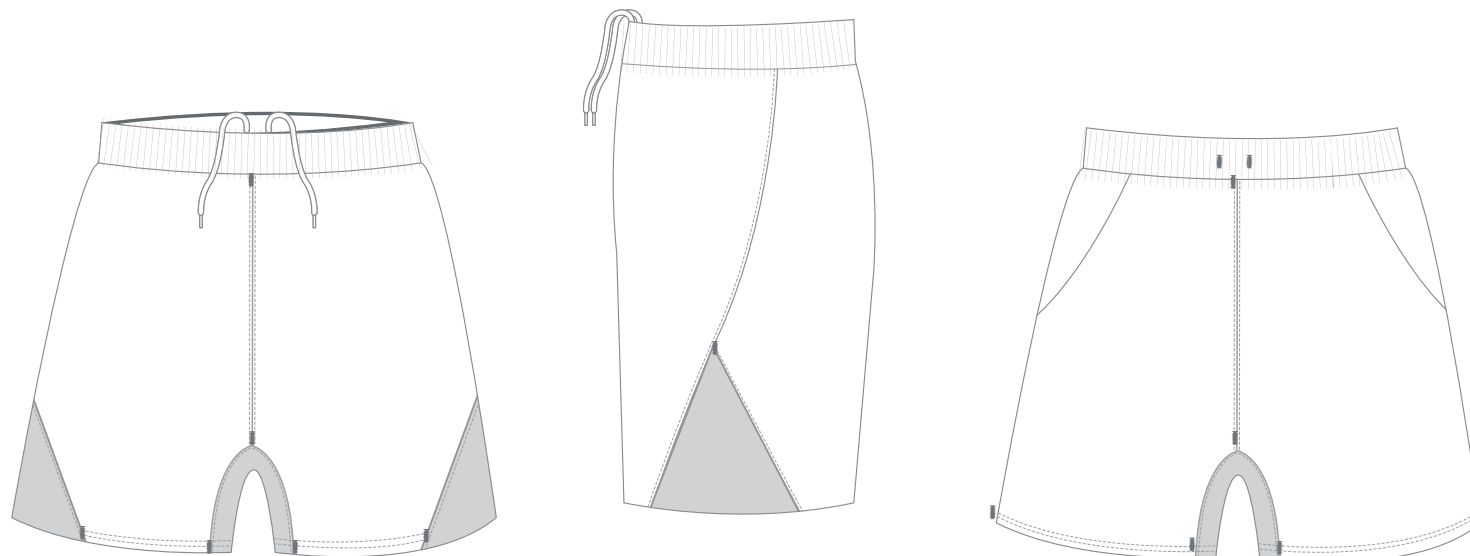
RUGBY SHIRT - LADIES - ONE FIT



	6	8	10	12	14	16	18	20	22
TO FIT UNDERBUST	28	30	32	34	36	38	40	42	44

FULLY SUBLIMATED - 1 COLLAR AVAILABLE
FABRIC OPTIONS - THT951, FK250
PLEASE NOTE FABRICS CAN ALTER SIZING

RUGBY - SHORT - MENS

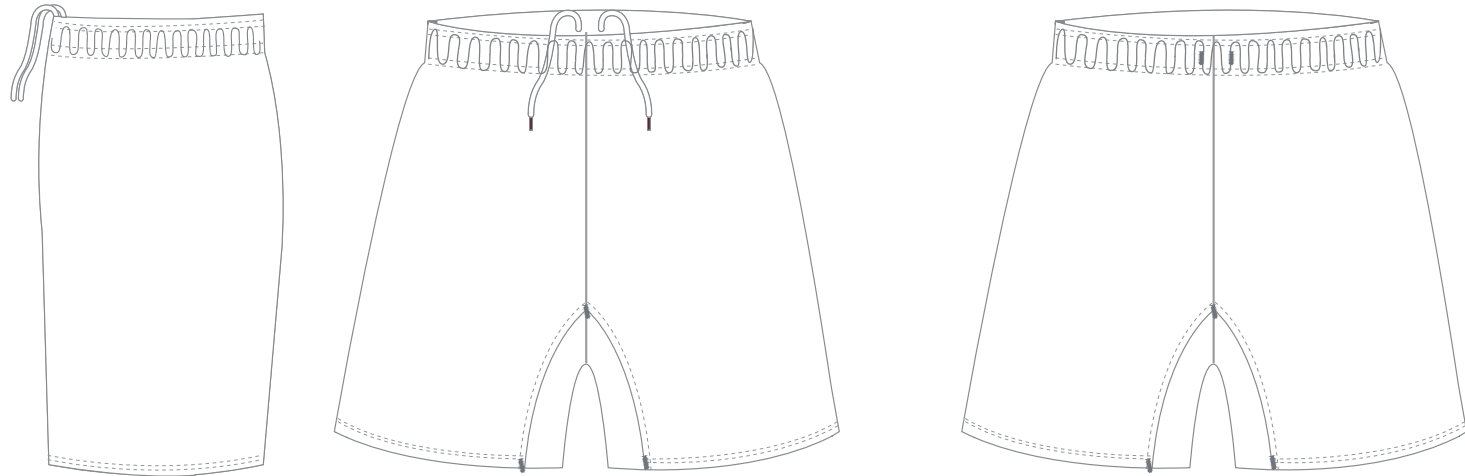


	XSJ	SJ	MJ	LJ	YOUTH	SMALL	MEDIUM	LARGE	XL	2XL	3XL
TO FIT WAIST	22	24	26	28	30	32	34	36	38	40	42

FULLY SUBLIMATED - MORE OPTIONS AVAILABLE
FABRIC OPTIONS -

PLEASE NOTE FABRICS CAN ALTER SIZING

RUGBY SHORT - LADIES



	6	8	10	12	14	16	18	20
TO FIT WAIST	24	26	28	30	32	34	36	38

**FULLY SUBLIMATED
FABRIC OPTIONS -**

PLEASE NOTE FABRICS CAN ALTER SIZING

RUGBY VEST



	YOUTH	SMALL	MEDIUM	LARGE	XL	2XL	3XL	4XL
TO FIT CHEST	38	40	42	44	46	48	50	52

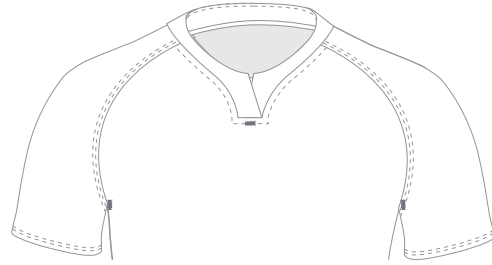
FULLY SUBLIMATED

FABRIC OPTIONS - COOLTECH, SUPACOOOL, MK 150

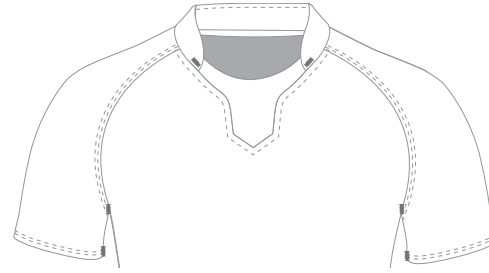
PLEASE NOTE FABRICS CAN ALTER SIZING

RUGBY NECKLINE OPTIONS

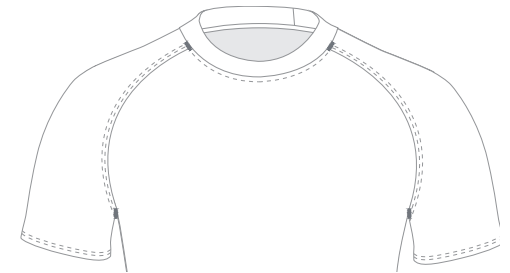
PRO & STANDARD FIT



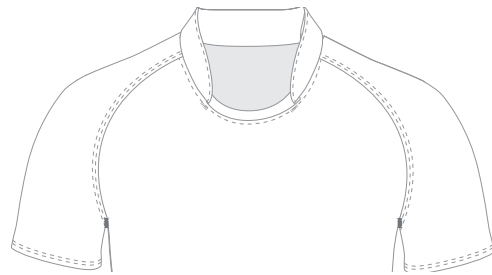
WALES NECKLINE



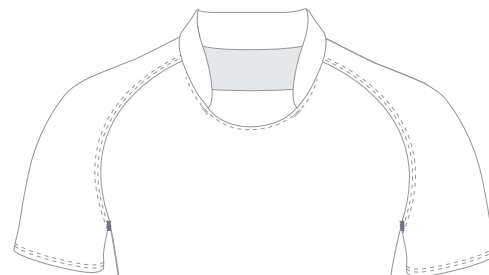
SOUTH AFRICA NECKLINE



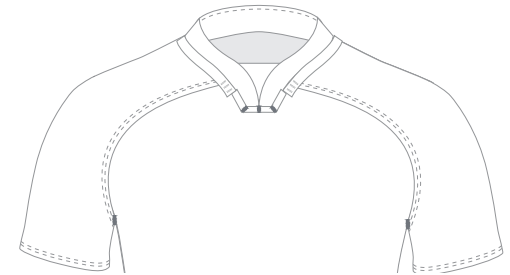
ROUND NECK



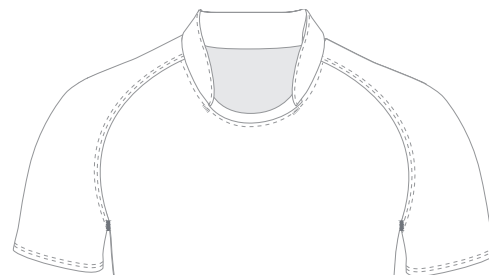
STAND UP COLLAR (INSERT)



STAND UP COLLAR (TONGA)



Y NECK



**LADIES STAND UP COLLAR (INSERT)
SINGLE FIT ONLY**